

Funding and Human Resources

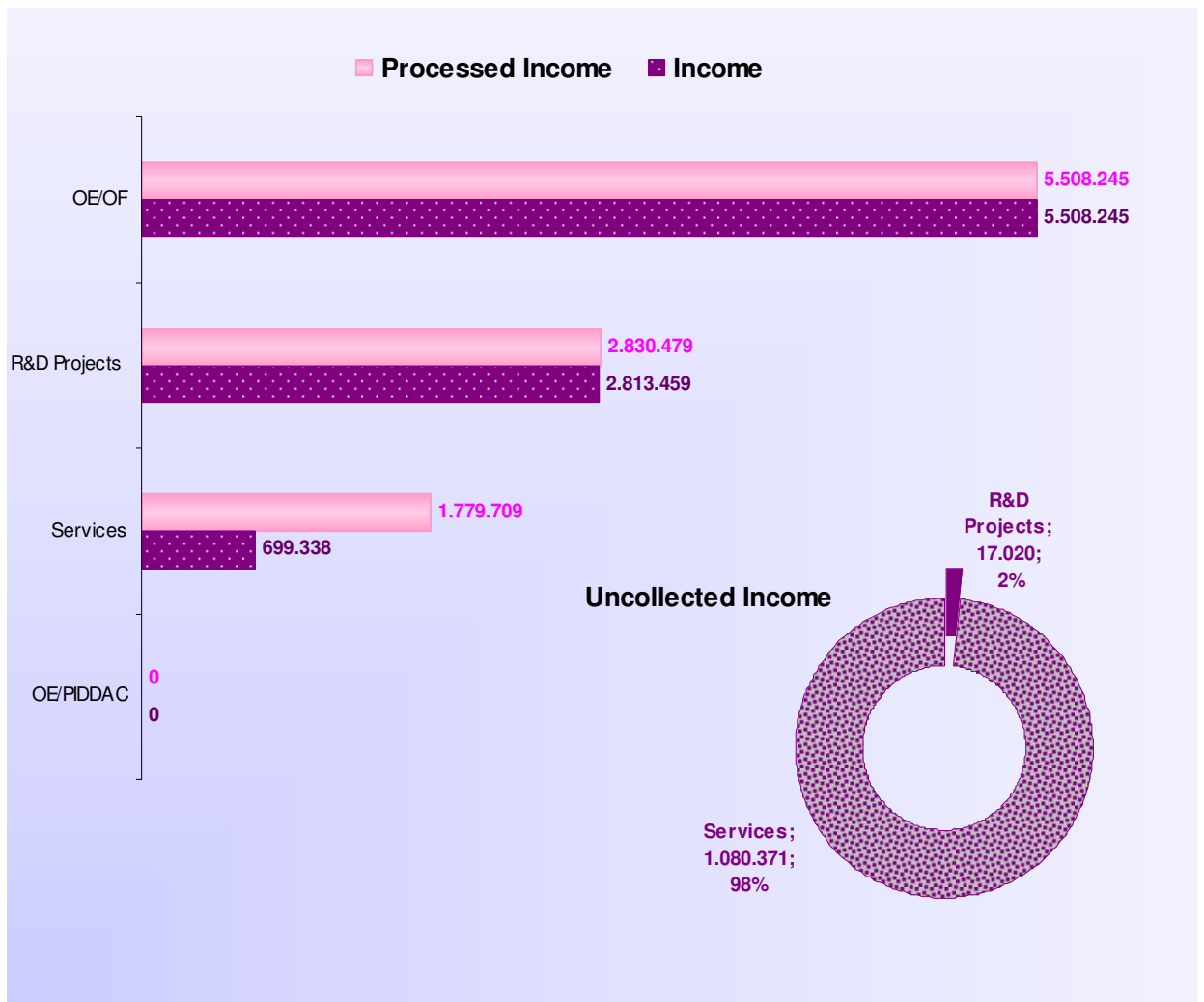


2011_INCOME SOURCES



	Processed Income	Income	Uncollected Income
OE/OF	5.508.245	5.508.245	0
R&D Projects	2.830.479	2.813.459	17.020
Services	1.779.709	699.338	1.080.371
OE/PIDDAC	0	0	0
Total	10.118.433	9.021.042	1.097.391

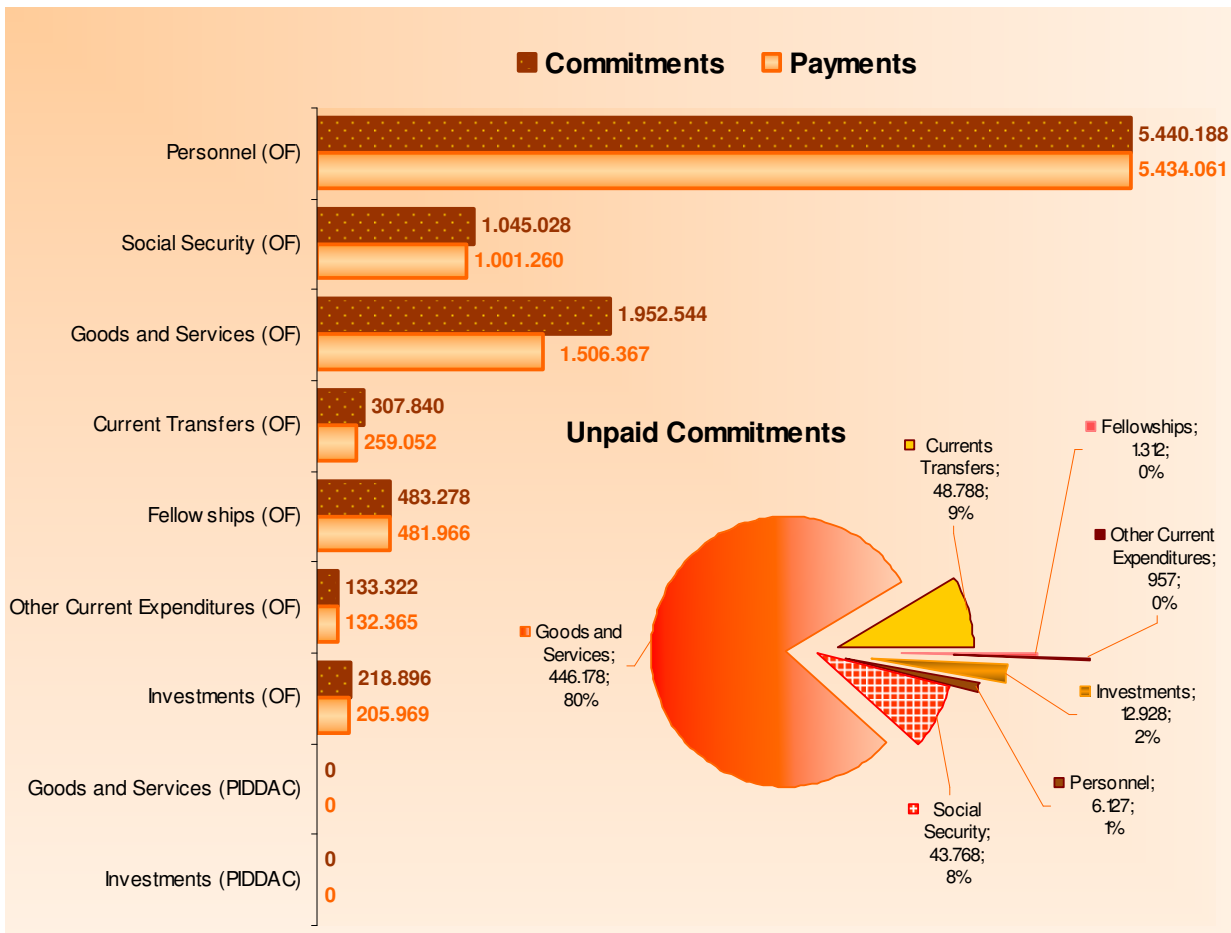
Euro



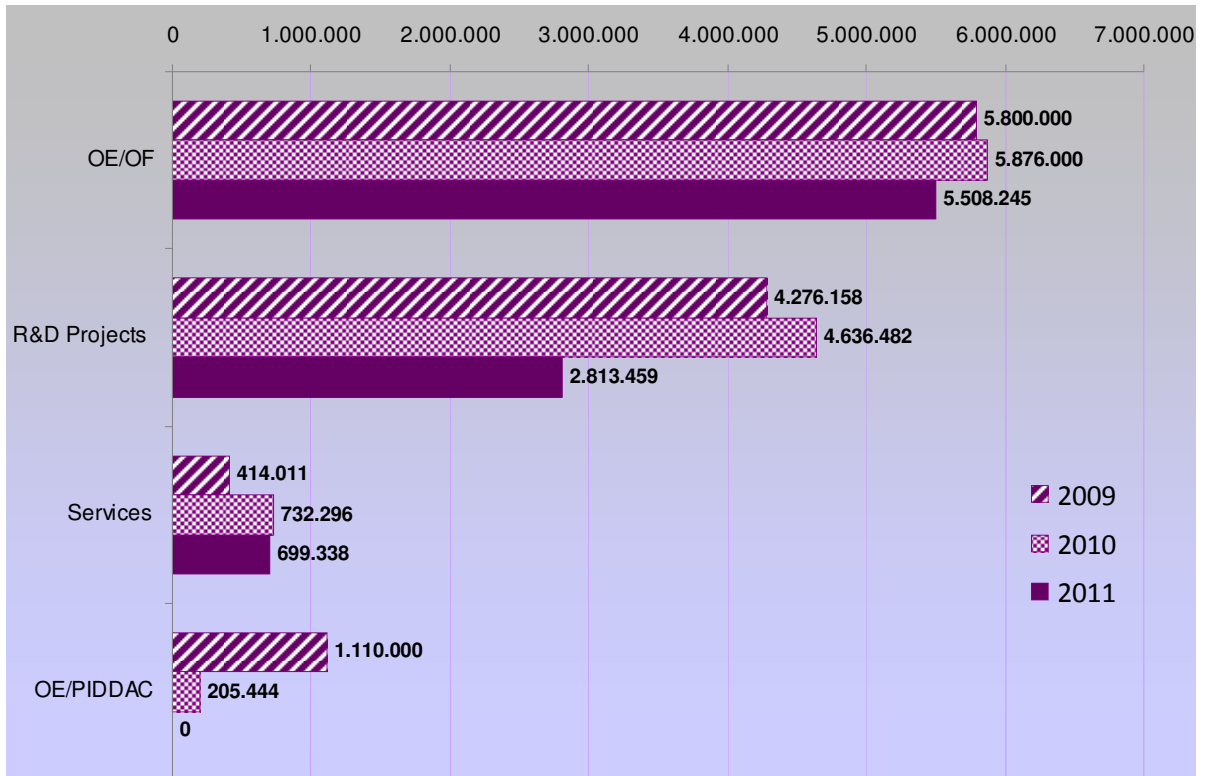
2011_EXPENSES

Operating Costs: (OF)	Euro		
	Commitments	Payments	Unpaid Commitments
Personnel (OF)	5.440.188	5.434.061	6.127
Social Security (OF)	1.045.028	1.001.260	43.768
Goods and Services (OF)	1.952.544	1.506.367	446.178
Current Transfers (OF)	307.840	259.052	48.788
Fellowships (OF)	483.278	481.966	1.312
Other Current Expenditures (OF)	133.322	132.365	957
Investments (OF)	218.896	205.969	12.928
Total	9.581.096	9.021.039	560.057

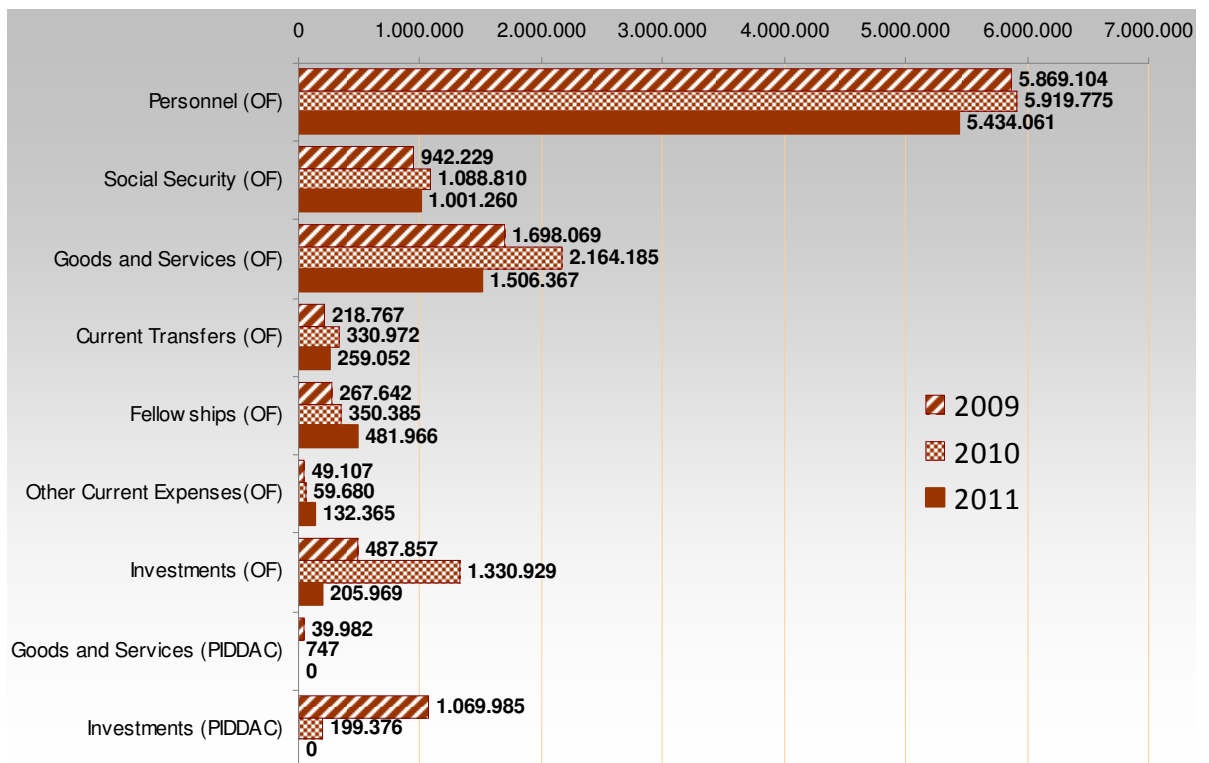
Investment Costs: (PIDDAC)	Euro		
	Commitments	Payments	Unpaid Commitments
Goods and Services (PIDDAC)	0	0	0
Investments (PIDDAC)	0	0	0
Total	0	0	0



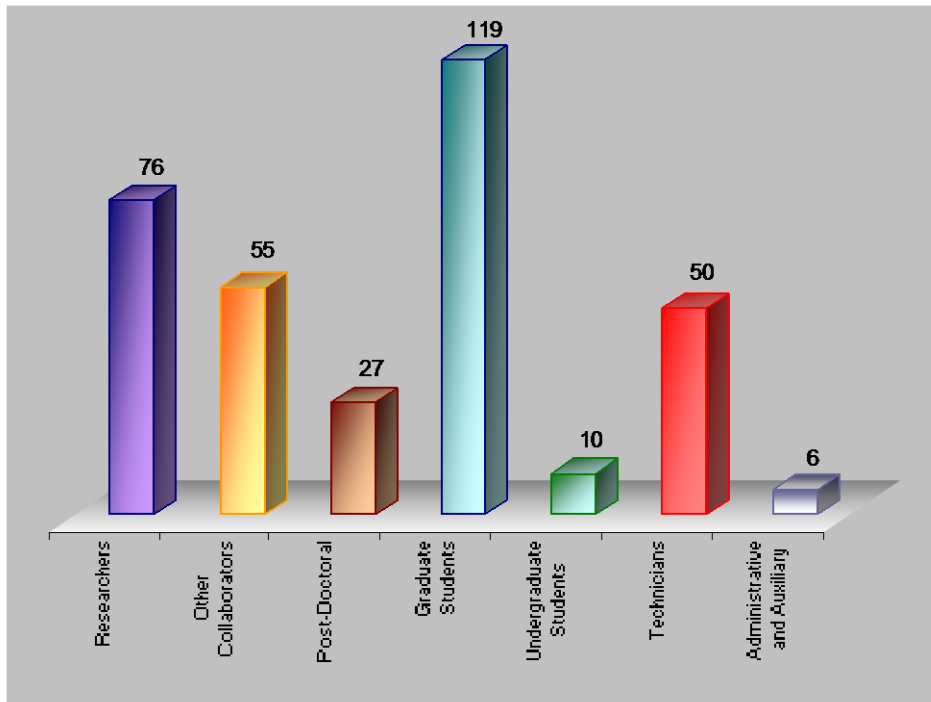
2009 - 2011_INCOME



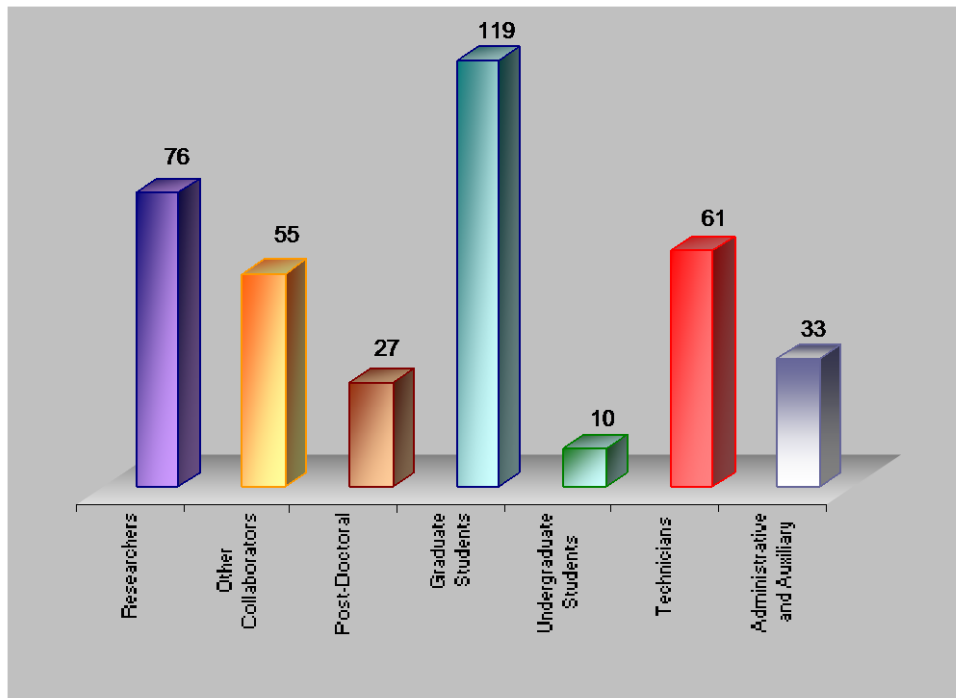
2009 - 2011_EXPENSES



2011_HUMAN RESOURCES



**R&D Personnel - 343
(Permanent staff 131)**

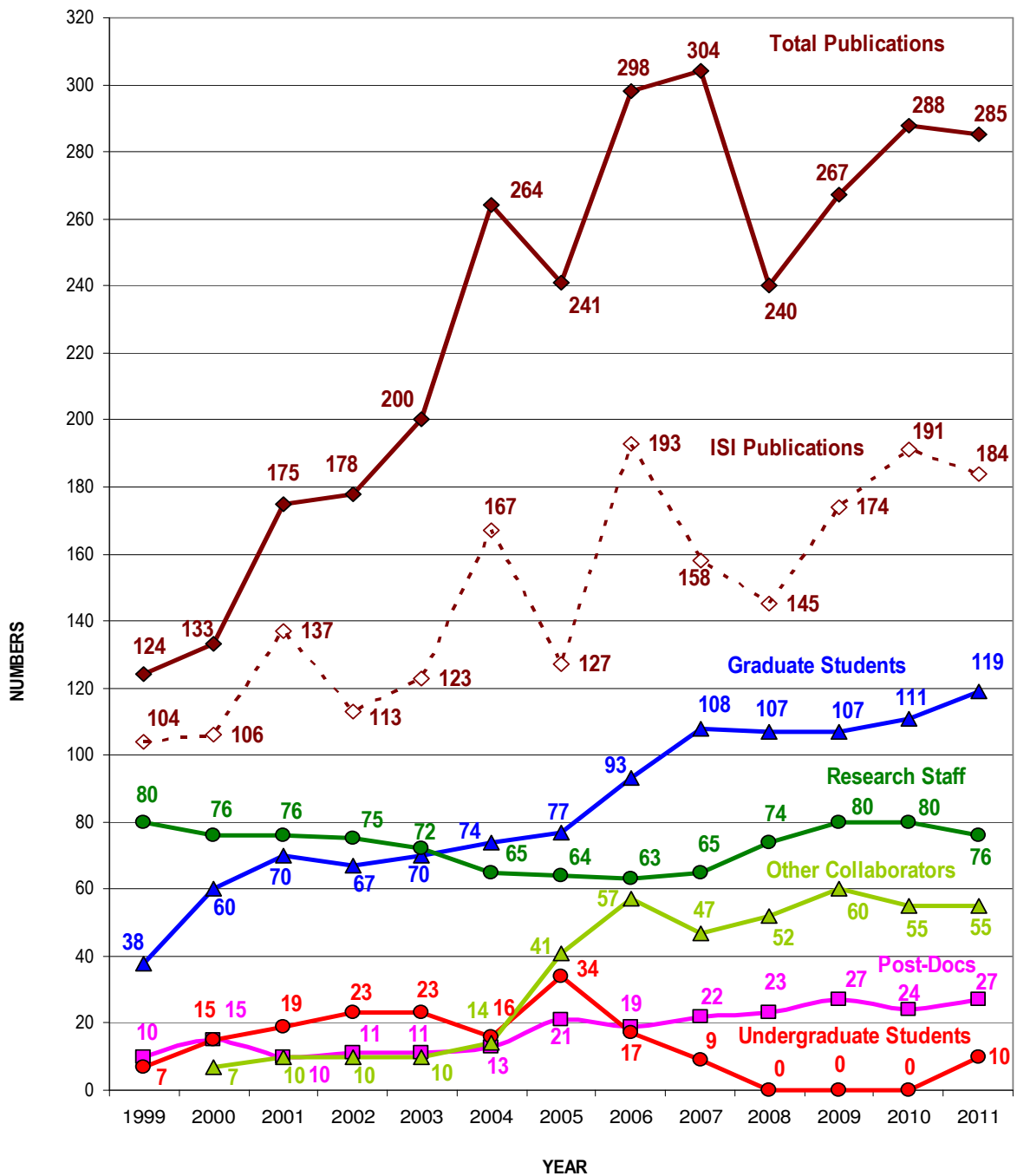


**Total Personnel – 381
(Permanent staff 165)**

Staff: Research Staff as of December 31.

Other collaborators include 39 professors from different universities and 16 researchers from other national and international institutions.

ITN IN NUMBERS

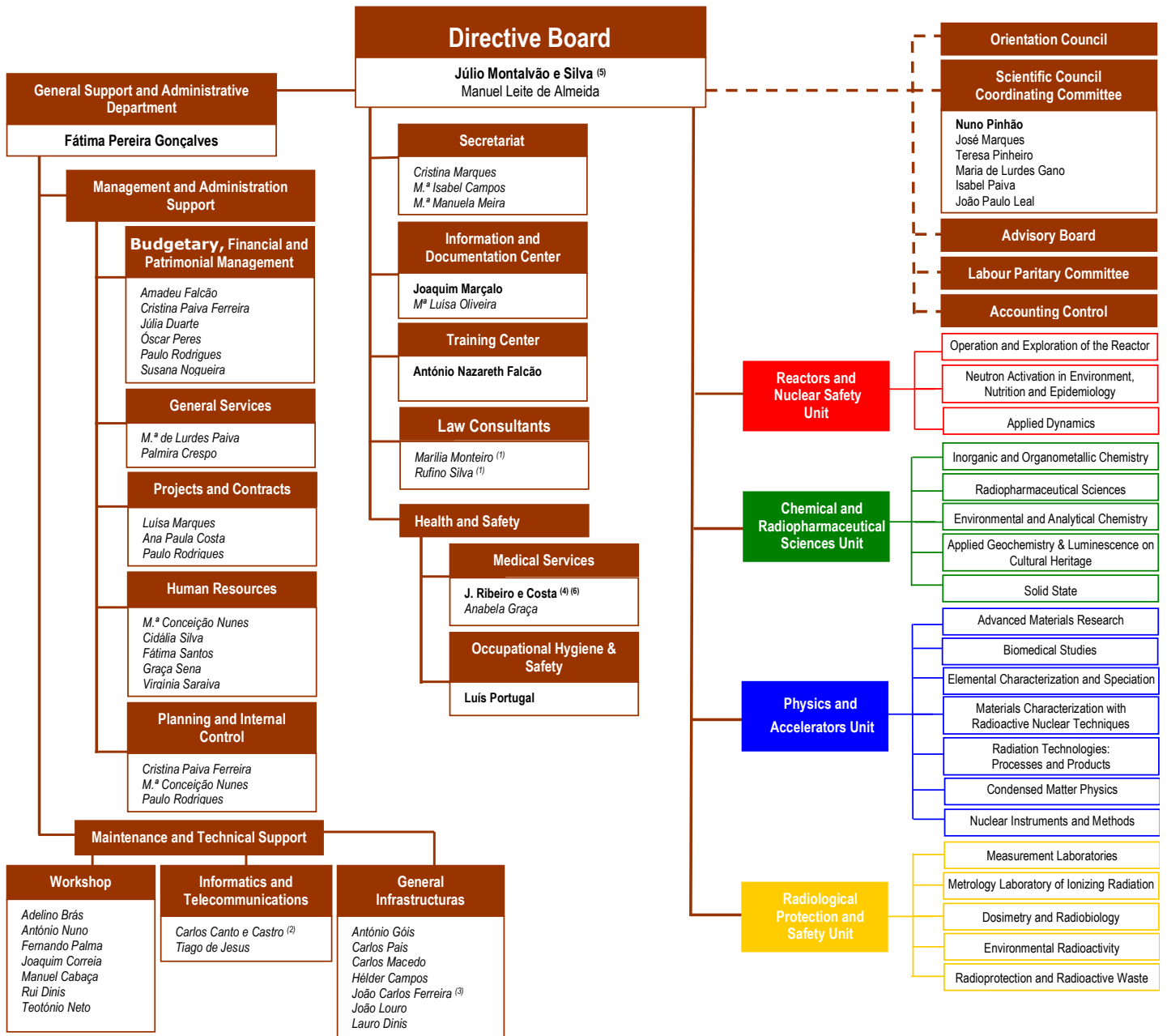


Staff: Research Staff as of December 31.

Other collaborators include 39 professors from different universities and 16 researchers from other national and international institutions.

Total Publications: Includes international journals (201), proceedings of international meetings (76), and books/book chapters (8).

ITN STRUCTURE



(1) Law Consultant
 (2) Information Technology Consultant
 (3) Motorist (detached from INDEP)
 (4) Medical Consultant
 (5) Retired during 2011
 (6) Died in 2011

VISITS AND VISITORS TO THE INSTITUTE IN 2011

